

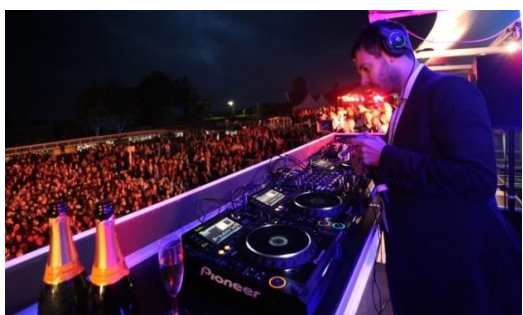
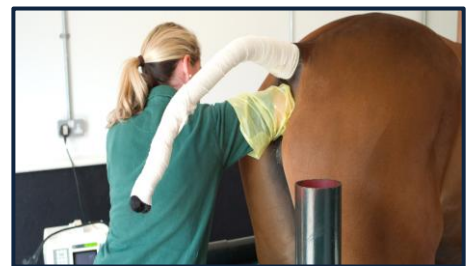
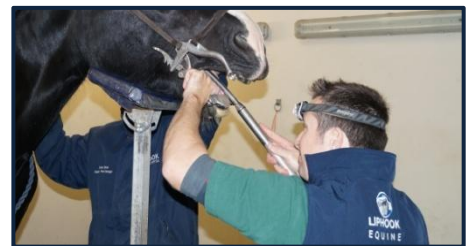


Essentials of Equine Practice

Friday 6th June - Sunday 8th June 2014

LIPHOOK
EQUINE HOSPITAL

The *Essentials of Equine Practice* course has been run every 2 years since 2001 and was specifically designed to bridge a gap in the provision of CPD for those graduates who had recently entered, or were intending to enter, equine practice. The general theme is a practical approach to common clinical scenarios in equine practice. In previous years delegates have comprised a combination of recent graduates and more experienced colleagues wishing to refresh their knowledge of general equine practice. The course is also suitable for final year veterinary students with a specific equine interest to prepare them for entering practice. All lectures and accommodation are at the beautiful Dunford House near Midhurst with the practical demonstrations at the Liphook Equine Hospital. This course was planned to provide both instruction and an opportunity to meet informally with colleagues in a large, first opinion and referral practice and to question us on why we do what we do. The 3 days are primarily "short and punchy" presentation based with an afternoon of practical demonstrations on Saturday. All meals and accommodation are included in the registration fee as well as a visit to a Friday evening race meeting at Goodwood (with a world-famous DJ afterwards!) and also a course dinner on Saturday night.



Course content includes: PPID, back problems, diarrhoea, coughing, EMS, obesity, laminitis, lameness, tendon and ligament injuries, 1st aid for fractures, castration, dentistry, myopathies, acutely painful eyes, AI, sick foals, retained placenta, limb deformities, radiography, farriery, heart murmurs, choke, gastric ulcers, colic, skin disease, nerve blocks, liver disease, strangles, exotic diseases, the pre-purchase examination and euthanasia.

This 3-day course begins in the morning of Friday 6th June and continues until mid-afternoon on Sunday 8th June. The registration fee of £495 includes 2 nights' accommodation on site, all meals and entertainment. Please contact tasha.wilson@theleh.co.uk for further details or fill in the attached form and send or email it back to us.

Liphook Equine Hospital, Portsmouth Road, Liphook, Hampshire, GU30 7JG

Phone: 01428 727200, Fax: 01428 722263, E-Mail: post@theleh.co.uk. Website: www.theleh.co.uk