



Essentials of Equine Practice

LIPHOOK
EQUINE HOSPITAL

Friday 1st July - Sunday 3rd July 2016

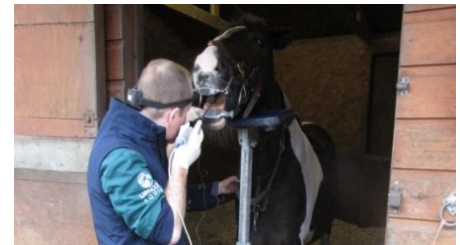
The *Essentials of Equine Practice* course has been run every 2 years since 2001 and was specifically designed to bridge a gap in the provision of CPD for those graduates who had recently entered, or were intending to enter, equine practice. The general theme is a practical approach to common clinical scenarios in equine practice. In previous years delegates have comprised a combination of recent graduates and more experienced colleagues wishing to refresh their knowledge of general equine practice. The course is also suitable for final year veterinary students with a specific equine interest to prepare them for entering practice. All lectures and accommodation are at the beautiful Dunford House in Midhurst, West Sussex, with the practical demonstrations at the Liphook Equine Hospital. This course is planned to provide both instruction and an opportunity to meet informally with colleagues in a large, first opinion and referral practice and to question us on why we do what we do. The 3 days are primarily "short and punchy" presentation based with an afternoon of practical on Saturday. All meals and accommodation are included in the registration fee, as well as an **exclusive** visit to the unique Hollycombe traditional fairground on the Friday evening with a BBQ and drinks, and also dinner on the Saturday night.



Course content includes:
strangles, back problems, EMS, obesity, castration, choke, clinical pathology in weight loss, tendon & ligament injuries, liver disease, gastric ulcers, wounds, coughs, painful eye, collapsed foal, assessment of lameness, acute severe lameness, diarrhoea, dentistry, cardiac murmurs, myopathies, advanced imaging techniques, AI, diagnostic aids in skin cases, endoparasite control, foaling emergencies, liver disease, PPID, acute colic.

Practicals include:
dentistry, endoscopy, nerve blocks, farriery

This 3-day course begins in the morning of Friday 1st July and continues until mid-afternoon on Sunday 3rd July. The registration fee of £495 includes 2 nights' accommodation on site, all meals and entertainment. Please contact tasha.wilson@theleh.co.uk for further details or fill in the attached form and send or email it back to us.



Liphook Equine Hospital, Portsmouth Road, Liphook, Hampshire, GU30 7JG

Phone: 01428 727200, Fax: 01428 722263, E-Mail: post@theleh.co.uk. Website: www.theleh.co.uk